

Accurately calibrate images and measure patient anatomy.

As the demand for more types of images—and more precise images—increases, so does the need for tools that help radiologists give doctors the insight they need. VoyantMark™ is the world's first fully-positionable, orthopedic X-ray calibration and marking device. Designed specifically to work with TraumaCad® surgical planning software, VoyantMark aids in accurately measuring patient anatomy.



Ball-Marker

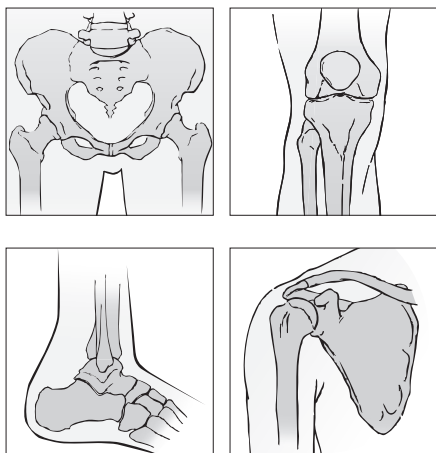
A 1-inch ball (25.4 mm) is the exact size from all angles and is positioned at the same plane as the bone of interest.

Base

3 base options are available to match specific applications: acrylic (shown), suction, and magnetic.

Using VoyantMark

See back page for detailed guidelines for hip, knee, shoulder, foot, and ankle positions.



Position the stainless steel ball-marker at the *same plane of the bone of interest*. If possible, palpate the anatomy to help align the ball-marker with the bone of interest.

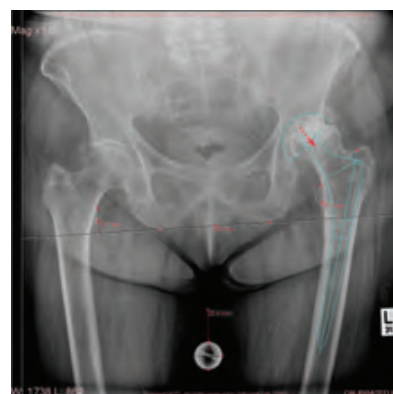
When the ball-marker is placed at the same level/plane as the bone of interest, the exact size of the anatomy can be accurately determined in TraumaCad digital planning software. Improper placement of the ball-marker can have a serious consequences for the patient regarding misinterpretations of templating.

Check the placement carefully—make sure the ball-marker is within the image area of the radiograph. You can only calibrate the image correctly if the ball-marker was placed in the image area *while the image was exposed*.

Automatic calibration in TraumaCad.

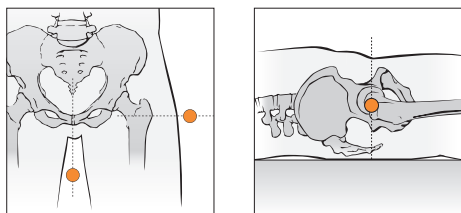


TraumaCad will automatically detect the presence of VoyantMark in an x-ray and size the image accurately.



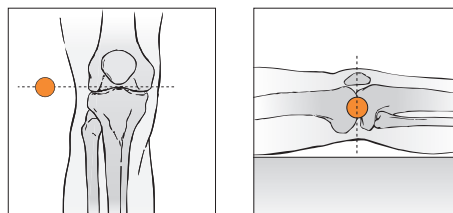
How to position VoyantMark for accurate calibration.

Hip



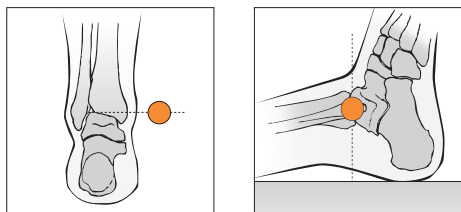
Position the ball-marker at the same plane as the greater trochanter. Optimal placement is medially, midline to femurs and proximally towards the symphysis pubis. Lateral placement is acceptable if the patient does not have a significant amount of adipose tissue. Note: In some cases the surgeon might request that VoyantMark be placed in the inner thigh area near the ischial tuberosity.

Knee



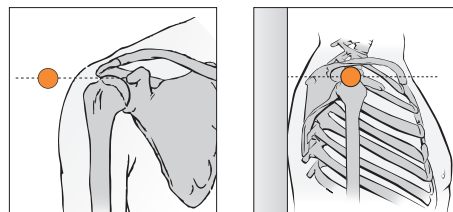
Position the ball-marker on a plane equivalent to the midline of the femur or just behind and below the patella. Place the ball-marker at the level medially or laterally of the knee joint assuring that the entire sphere is located within the field of view.

Ankle



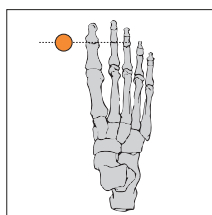
Position the ball-marker at the level of the medial or lateral malleolus, if the ankle is the bony landmark of interest.

Shoulder



Position the ball-marker at the plane of the acromion process in the lateral and AP views. This is subject to change according to physician needs.

Foot



Position the ball-marker at the level of the 1st Metatarsal.

For more information and instruction about VoyantMark, visit:

www.voyanthealth.com/voyantmark